

Reno-Tahoe International Airport Update



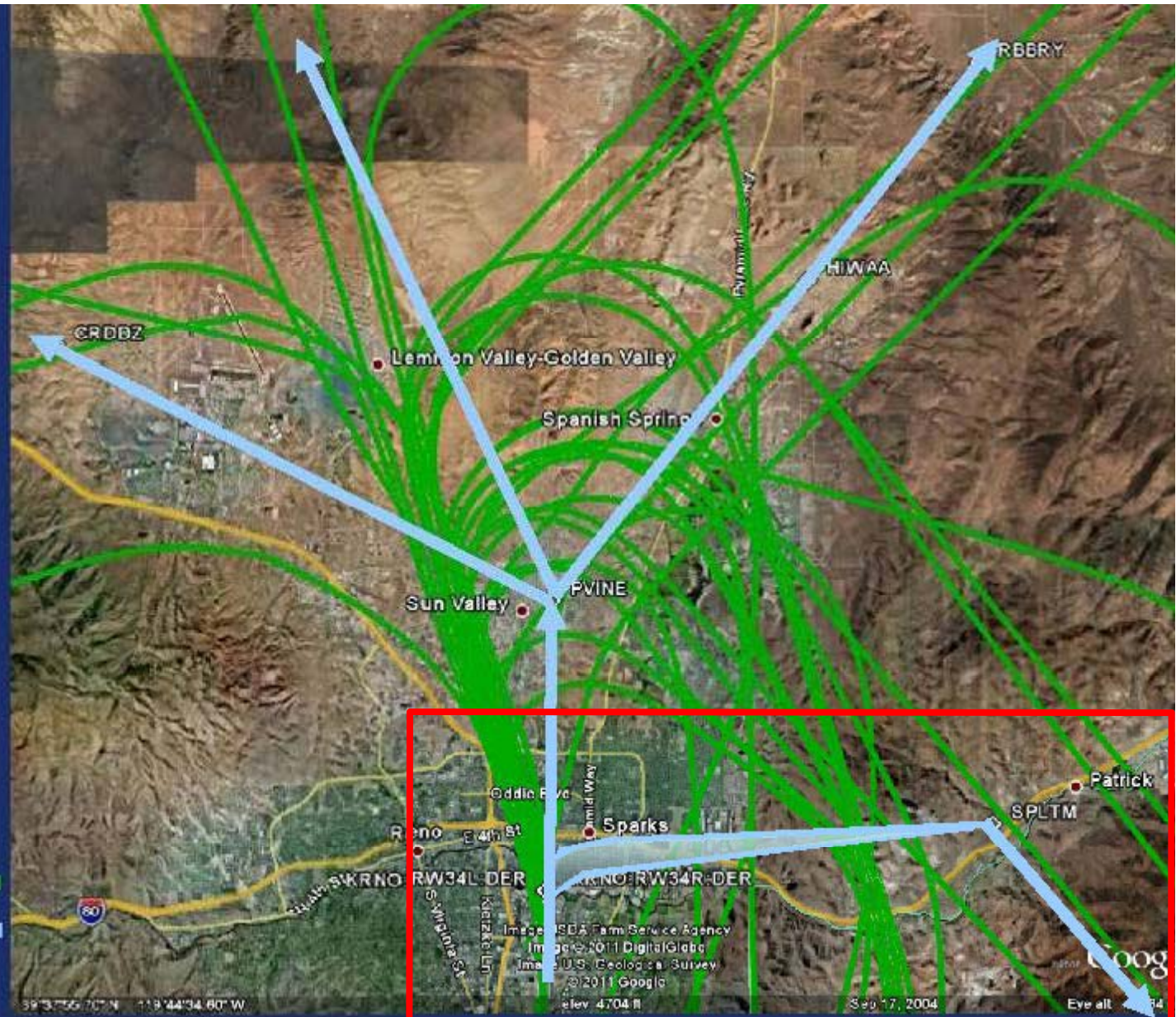
Monday, August 27, 2012
Sparks City Council


FAA Modifications to RTIA Air Traffic Procedures: SPLTM Departure Procedure

- FAA developed reorganized arrival and departure routes to enhance safety and efficiency of airspace.
- FAA presented proposed changes at various public meetings.
- FAA implemented changes starting in October 2011.



RY34 Departures (North Flow) 25% of Time



Historic Flight Tracks 
New Procedures 



SPLTM: Published October 2011

May 2012 (6,969 total operations)	Attempted SPLTM	Compliant	Not Compliant	Percent Compliant
Commercial Operations	181	94	87	52%
Cargo Operations	8	1	7	13%
General Aviation Operations	19	0	19	0%
Total (3.0% of total operations)	208	95	113	46%

June 2012 (7,332 total operations)	Attempted SPLTM	Compliant	Not Compliant	Percent Compliant
Commercial Operations	168	64	104	38%
Cargo Operations	10	4	6	40%
General Aviation Operations	13	3	10	23%
Total (2.6% of total operations)	191	71	120	37%

July 2012 (7,729 total operations)	Attempted SPLTM	Compliant	Not Compliant	Percent Compliant
Commercial Operations	176	67	109	38%
Cargo Operations	4	0	4	0%
General Aviation Operations	13	2	11	15%
Total (2.5% of total operations)	193	69	124	36%

Efforts to Increase SPLTM Success Rate

Airport Authority

- Provided poster with correct procedure to local air carriers
- Sent letters to air carrier chief pilots documenting compliance and requesting significant improvement
- Continuously monitoring SPLTM performance
- Providing weekly performance information to air carriers

FAA

- Verifying departure clearance as part of SPLTM departure
- Using “Reach Out to the Cockpit Program”
- Conducting outreach to carriers stressing importance of compliance
- Air Traffic Control not assigning SPLTM unless specifically requested by pilot

Air Carriers

- Reevaluating SPLTM procedures on an individual basis and in collaboration with other air carriers

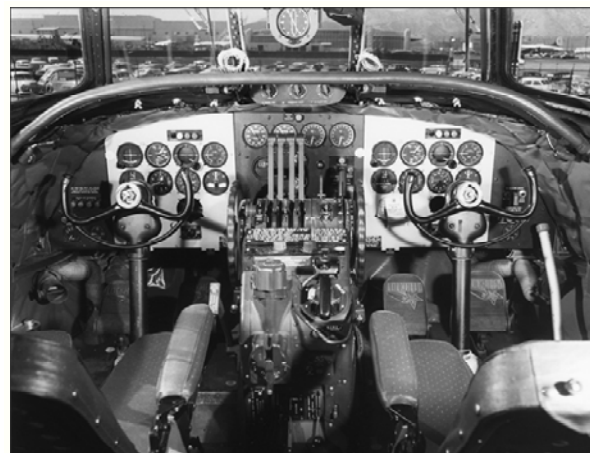
When Successful, Benefits Include:

Operational Benefits

- Streamlined Aircraft Configuration
- Optimized Profile Descents
- Unrestricted Climbs
- More Efficient Throttle Settings
- Less Aircraft Crossings
- More Direct Routings
 - Reduced Flying Miles
 - Reduced Delays

Environmental Benefits

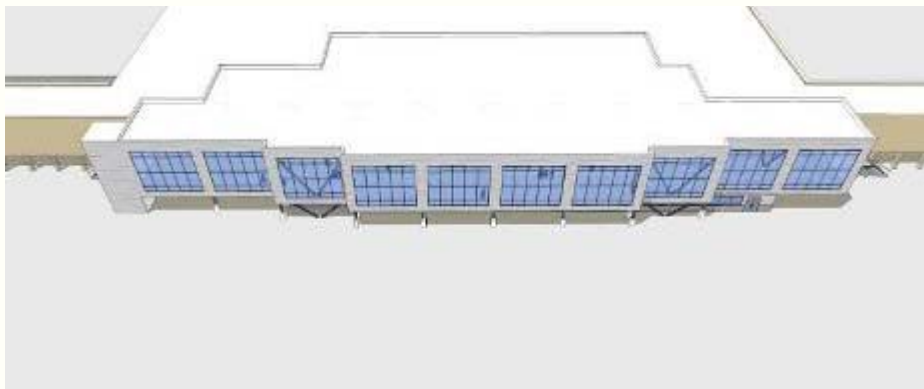
- Noise Reduction
- Reduced Fuel Use
- Reduced Emissions



Reno-Tahoe
Airport Authority

The Gateway Project: An Overview

- **Phase 1** – Baggage Claim Refurbishment
- **Phase 2** - IT Reconfiguration
- **Phase 3** - Consolidated Security Checkpoint of the Future
- \$29 million
- 17-month construction duration
- 275 construction workers
- **April 2013** - Project Completion



Baggage Claim Refurbishment



Reno-Tahoe
Airport Authority

Mountain House Restaurant



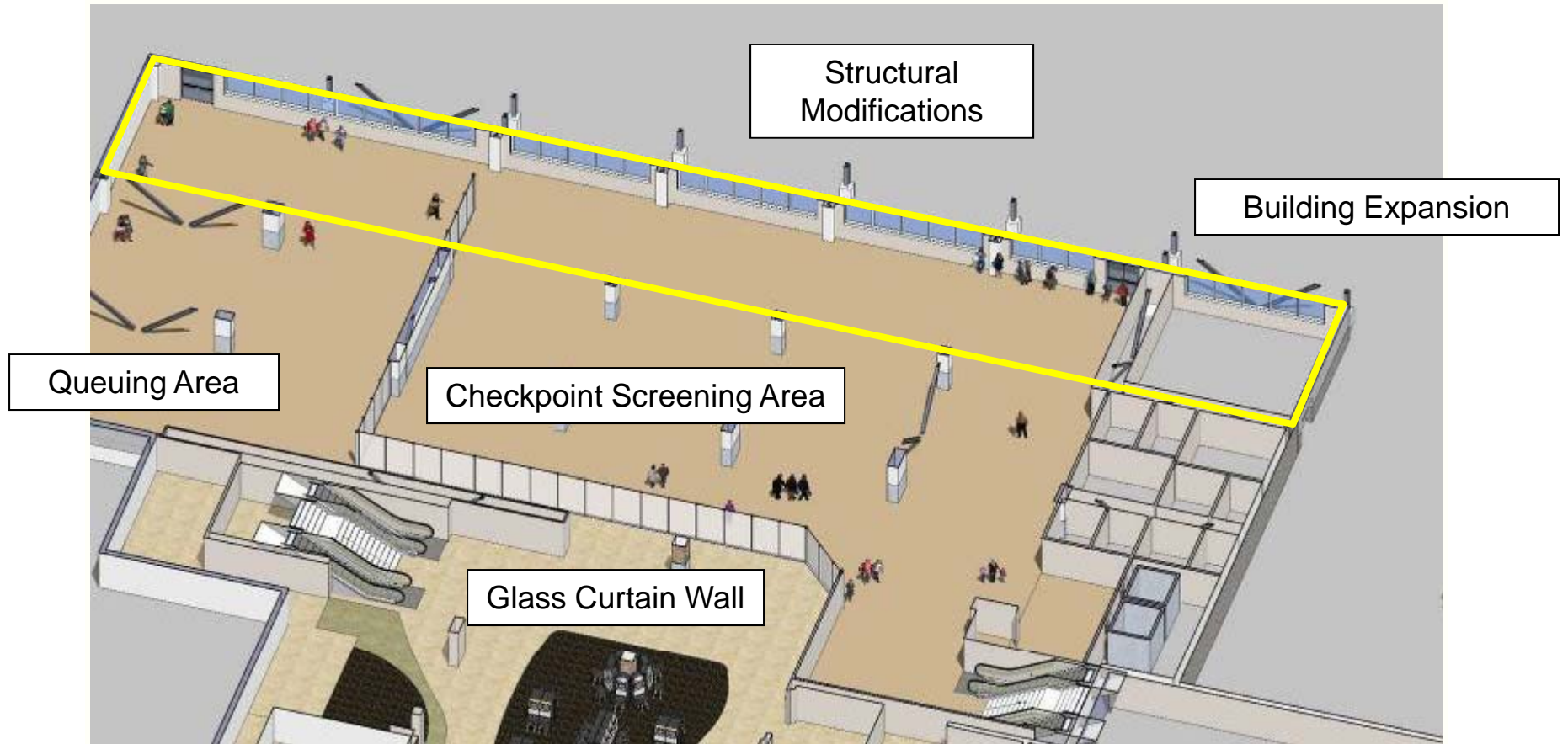
Reno-Tahoe
Airport Authority

Under Construction



Reno-Tahoe
Airport Authority

Consolidated Security Checkpoint of the Future



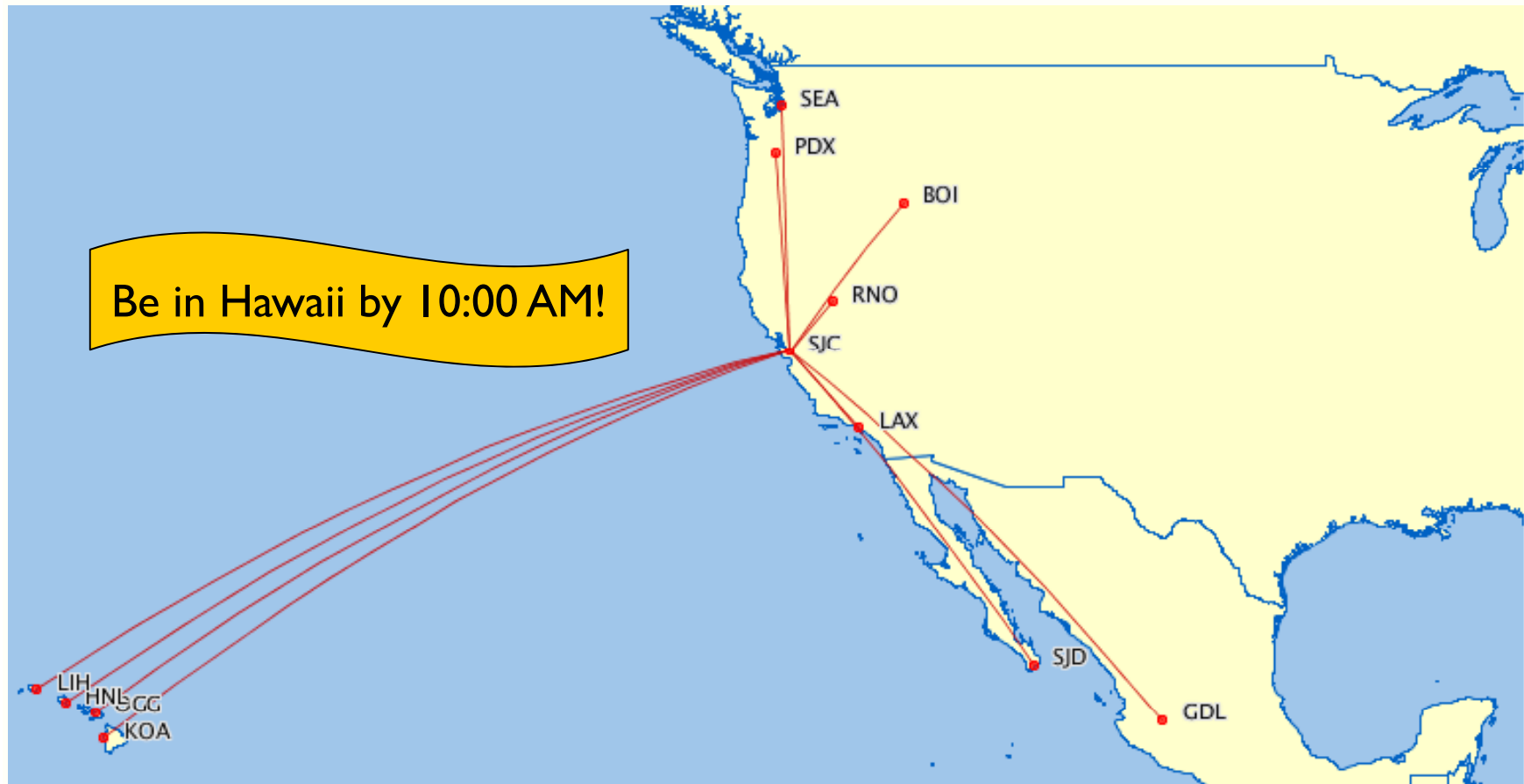
New Second Floor Concessions/Retail



Reno-Tahoe
Airport Authority



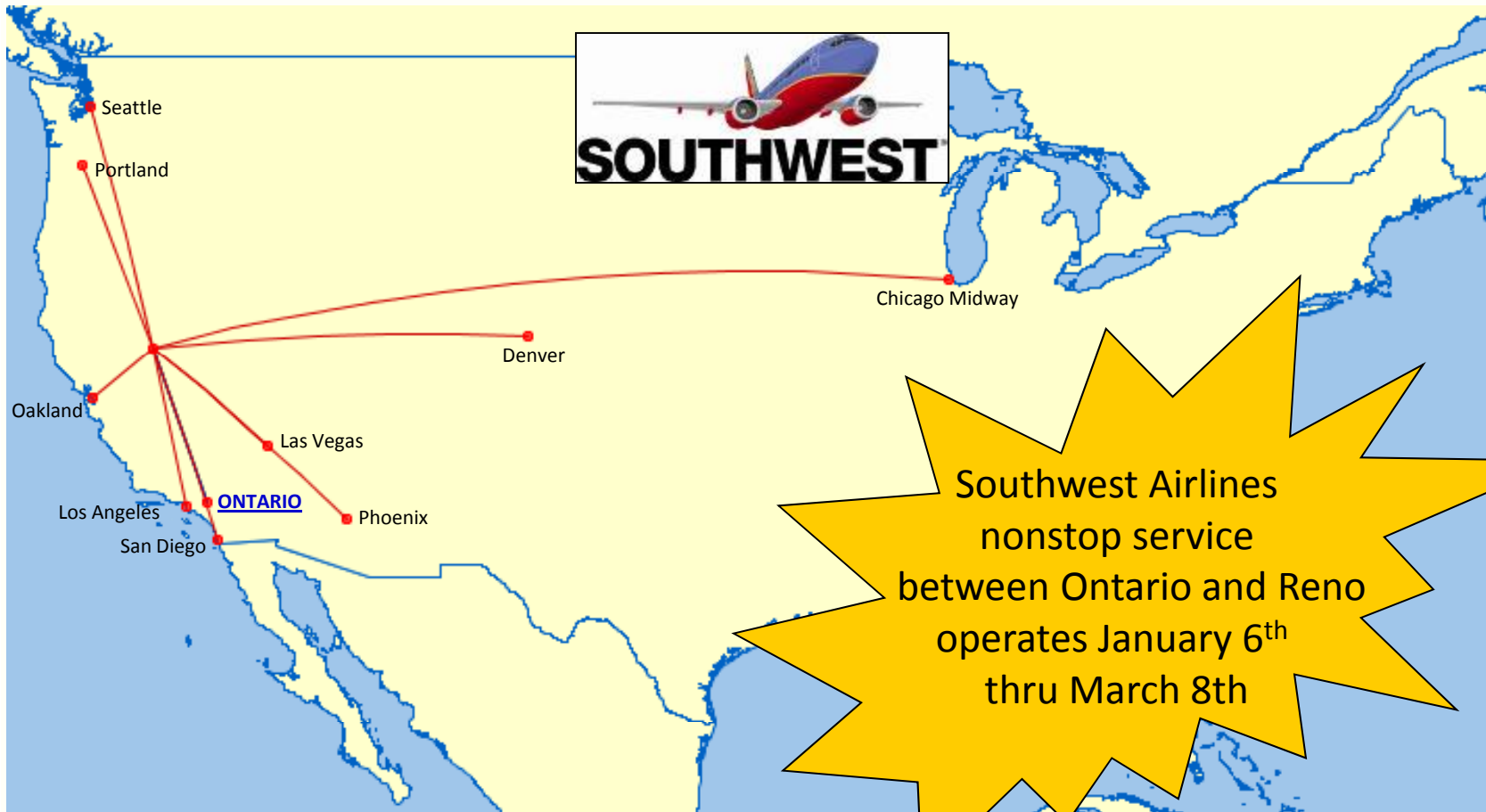
New Alaska Airlines Service to San Jose



Reno-Tahoe
Airport Authority



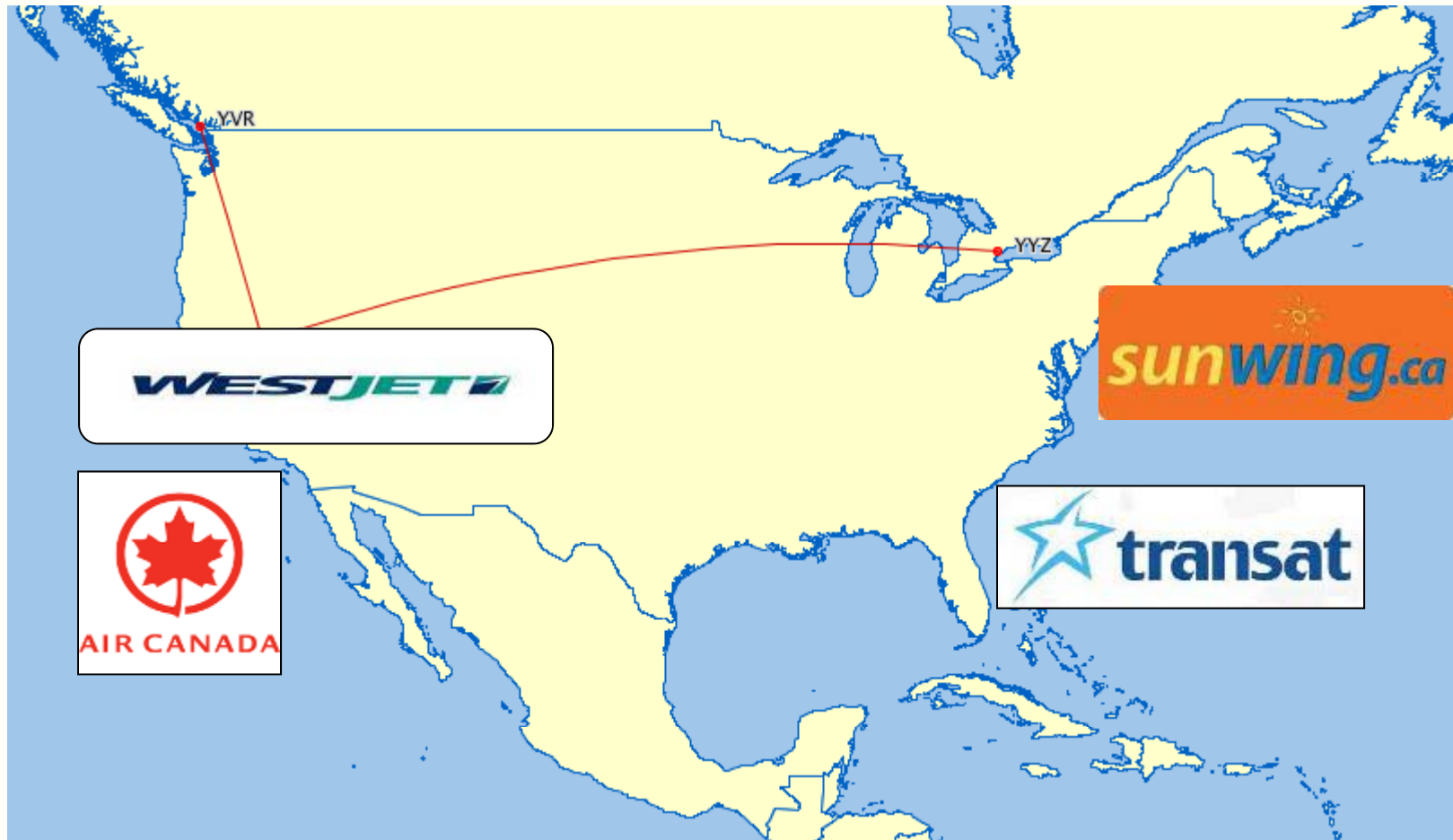
New Southwest Airlines Service to Ontario



Reno-Tahoe
Airport Authority



Canada Air Service Strategy



Reno-Tahoe
Airport Authority

International Air Cargo Service



- Global freight forwarder and logistics provider
- Headquartered in Chicago, IL (USA); expanding to Reno
- Four offices in China
 - Beijing
 - Tianjin
 - Dongguan
 - Qingdao
- Target is to begin Charter Program in late Fall 2012; targeting Shanghai

Thank you.



Reno-Tahoe
Airport Authority

17

And
up we
go.